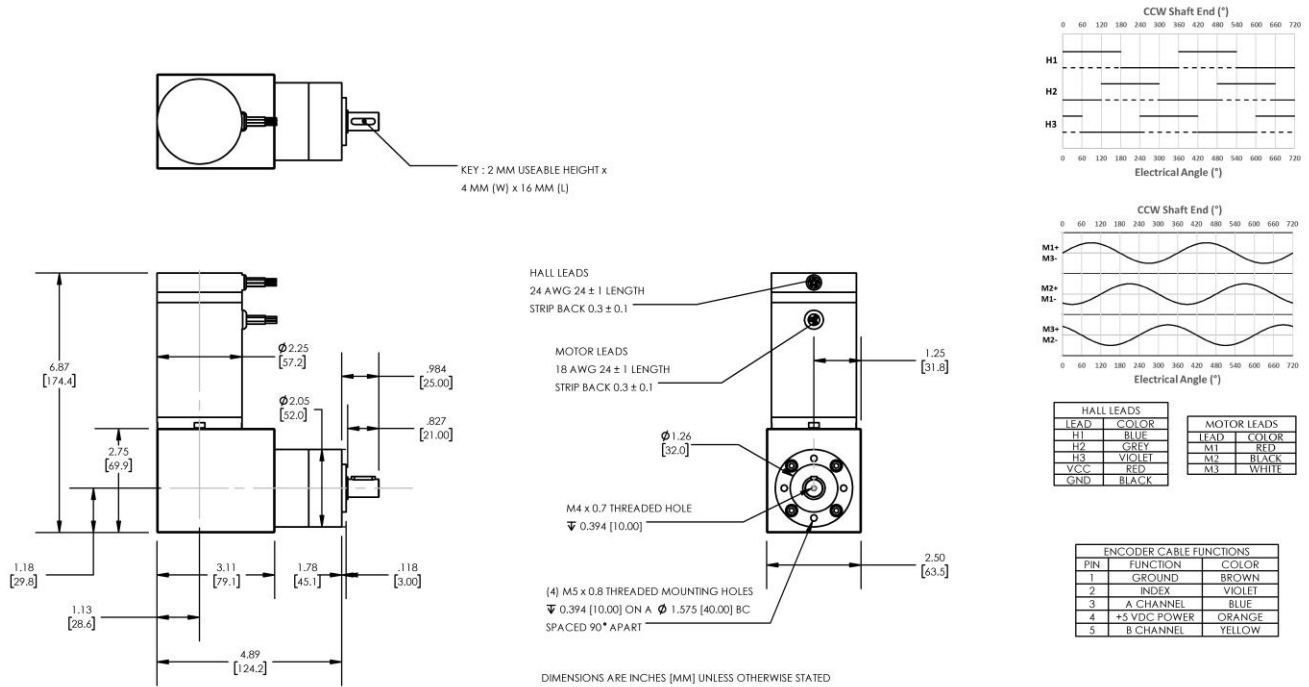


**Model Number:**

**MMP BL58-412H-60V GRA52-04.3**



PLANETARY GEARMOTOR OUTPUT PARAMETERS:	VALUE	UNITS	TOLERANCE
Gearhead Ratio (exact)	4.28 : 1		
Gearhead Shaft Output Speed (at full-load)	799	RPM	MAX
Gearmotor Rated Continuous Torque	18	In-Lbs	MAX
Gearmotor Rated Peak Torque	46++	In-Lbs	----
Gearhead Standard Backlash	42	Arc Minutes	MAX
Gearhead Efficiency	80%	----	----
Output Shaft Radial Load Capacity	45	Lbs	MAX
Output Shaft Axial Load Capacity	14	Lbs	MAX
Gearmotor Total Weight	4.8	Lbs	MAX

++ All Peak Torque values are dependent upon duty. Contact our sales office for details.

DC MOTOR PERFORMANCE PARAMETERS:	VALUE	UNITS	TOLERANCE
Rated DC Voltage	60	DC VOLTS	----
Rated Continuous Current	5.3	AMPERES	----
No-Load Speed	4762	RPM	MAX
Rated Speed	3420	RPM	+/- 15%
Rated Continuous Power Out	218	WATTS	+/- 15%
Rated Continuous Torque	86	OZ-IN	----
Peak Torque (motor only)	215	OZ-IN	----
No-Load Current	0.28	AMPERES	MAX
Back EMF Constant (Ke)	12.6	V/KRPM	+/- 10%
Torque Constant (Kt)	17.0	OZ-IN/AMP	+/- 10%
DC Armature Resistance	3.17	OHMS	+/- 15%
Armature Inductance	2.40	mH	+/- 15%
Armature temperature	155	DEG. C	MAX

**NOTES:**

- ENCODER & BRAKE OPTIONS AVAILABLE – [FOLLOW THIS LINK FOR DETAILS](#)
- NEMA MOUNTING FLANGE OPTION AVAILABLE – [FOLLOW THIS LINK FOR DETAILS](#)

## MIDWEST MOTION PRODUCTS, INC

DESIGN, MANUFACTURING & DISTRIBUTION - MOTION CONTROL EQUIPMENT

[www.midwestmotion.com](http://www.midwestmotion.com)

email: [sales@midwestmotion.com](mailto:sales@midwestmotion.com)